

VRTNA OPREMA
GARDEN EQUIPMENT

vebo.si®

Contract furniture

AG VEBO d.o.o., Tržaška c. 133
1000 Ljubljana



Garden Set UNIS

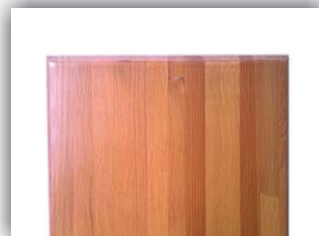
Foldable three-piece set, ideal solution for organizing picnics and fun outdoors, as well as indoors. Folding metal construction ensures easy transport and storage in small space.

Metal frame is made of hot rolled steel strip St 37.2, thickness of 2,0 and 2,5 mm.

Table- and bench boards made of spruce or fir, glued with good quality glue D-4 and dried on 8% (+ -2) moisture.



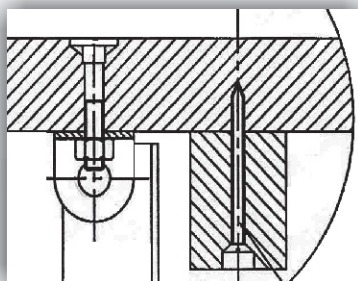
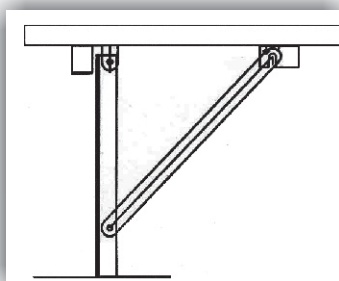
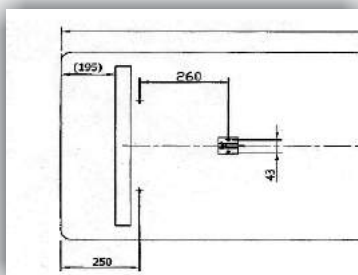
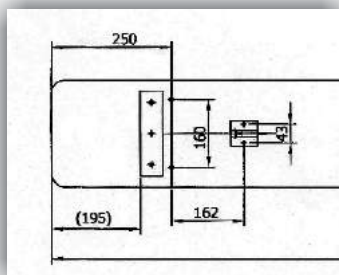
Detalji/Details



Colors: Wooden parts are painted with UV lacquer, in colors on customer's request. All metal parts are electrostatic coated with powdered lacquer by RAL card, on customer's request. The brackets are galvanized - light.

Karakteristike/Characteristics:

Dimenzije/Dimensions [mm]	Dužina/Length	Širina/Width	Visina/Height	Debljina ploča/Thickness of Boards
Sto/Table:	500/600/700/800	2000/2200	780	27
Klupa/Bench:	250	1200/1600/2000/2200	480	27



Perfect solution for collective gatherings. Round folding set consists of a round table and 3 curved benches that follow the shape of the table. Savings space during use and storage.

Metal frame of table is made of hot rolled or cold rolled elliptical steel pipes 36 x 18 mm, 30 x 15 mm and the metal construction of benches made of hot rolled steel strip St 37.2, thickness of 2,0 and 2,5 mm. Wooden parts made of spruce or fir, glued with good quality glue D-4 and dried on 8% (+ -2) moisture



Detalji/Details



Colors: Wooden parts are painted with UV lacquer, in colors on customer's request. All metal parts are electrostatic coated with powdered lacquer by RAL card, on customer's request. The brackets are galvanized - light.

Karakteristike/Characteristics:

Dimenzije/Dimensions [mm]	Promjer/Diameter	-	Visina/Height	Debljina ploča/Thickness of Boards
Sto/Table:	Ø 1100	-	780	27
Klupa/Bench:	-	-	480	27



Bench NEW BMAE

Bench with three wooden laths, rounded edges, mounted on a metal construction made of pipes Ø 25 x 1,8.
Very stable and practical benches with metal frame of pipe, in 2 models.
Intended for changing rooms, collective gatherings, canteens etc.
These benches are suitable for places that require aesthetic appearance and quality in one product.



Detalji/Details

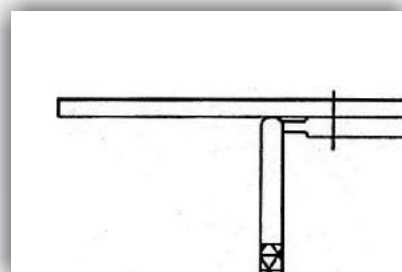
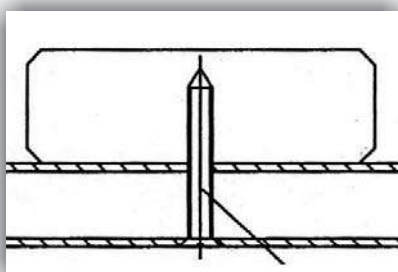
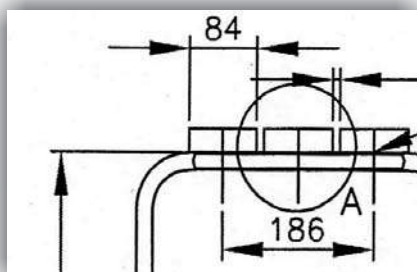


Colors: Wooden parts are painted with UV lacquer, in colors on customer's request. All metal parts are electrostatic coated with powdered lacquer by RAL card, on customer's request.



Karakteristike/Characteristics:

Dimenzije/Dimensions [mm]	Dužina/Length	Širina/Width	Visina/Height	Debljina ploča/Thickness of Boards
Bench NEW BMAE	1200/1600/2000	400	450	27



Packaging on the disposable palette, 100 pcs. Bench edges are protected by cardboard shields. Palette is being protected with stretch wrap, and tied with PVC tape.



Bench BMAE

BMAE metal construction is made of pipes of hot rolled steel strip ST 37.2, Ø 21,3 x 1,5 mm.

Wooden part made of spruce or fir, glued with good quality glue D-4 and dried on 8% (+ -2) moisture.

Very stable and practical benches with metal frame of pipe, in 2 models. Intended for changing rooms, collective gatherings, canteens etc.

These benches are suitable for places that require aesthetic appearance and quality in one product.



Detalji/Details



Colors: Wooden parts are painted with UV lacquer, in colors on customer's request. All metal parts are electrostatic coated with powdered lacquer by RAL card, on customer's request

SOLO BENCHES

Karakteristike/Characteristics:

Dimenzije/Dimensions [mm]	Dužina/Length	Širina/Width	Visina/Height	Debljina ploča/Thickness of Boards
Bench BMAE	1200/1600/2000	400	450	18

Packaging on the disposable palette, 100 pcs. Edges are protected by cardboard shields. Palette is being protected with stretch wrap, and tied with PVC tape.



Oval table

Oval table is very practical for all collective gatherings. It has a foldable metal construction made of hot rolled steel strip St 37.2, thickness of 2,0 and 2,5 mm or of steel pipes, according to customer's request. Wooden parts made of spruce or fir, glued with good quality glue D-4 and dried on 8% (+ -2) moisture.



Detalji/Details

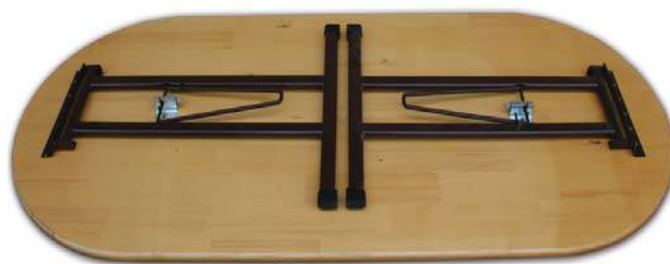


Colors: Wood parts painted with UV lacquer, on customer's request. All metal parts are electrostatic coated with powdered lacquer by RAL card, on customer's request. The brackets are galvanized - light.

Karakteristike/Characteristics:

Dimenzije/Dimensions [mm]	Promjer/Diameter	Širina/Width	Visina/Height	Debljina ploča/Thickness of Boards
Ovalni sto/Oval table	1400/1800	800	780	27

Packaging on the disposable palette, 15 pcs. Protection for the transport and handling is ensured. Palette is being protected with stretch wrap, and tied with PVC tape. Possibility of individual packaging in cardboard on customer's request.



Bench with backrest

Practical and very comfortable bench is made of high quality wood with a foldable metal frame. Easy to install on all surfaces.



Detalji/Details



Colors: Wooden parts are painted with UV lacquer, in colors on customer's request. All metal parts are electrostatic coated with powdered lacquer by RAL card, on customer's request.

SOLO BENCHES

Karakteristike/Characteristics:

Dimenzije/Dimensions [mm]	Promjer/Diameter	Širina/Width	Visina/Height	Debljina ploča/Thickness of Boards
Klupa/Bench:	2000/2200	300	480	28

Packing on the disposable palette, 15 pcs. Bench edges are protected by cardboard shields. Palette is being protected with stretch wrap, and tied with PVC tape. Possibility of individual packaging in cardboard on customer's request.



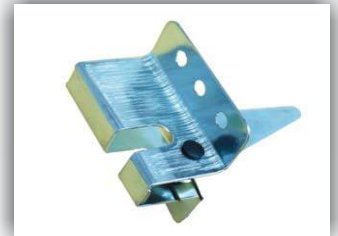
Kids garden set

Folding children's sets are intended for outdoor and indoor use. Designed for use at home, for a variety of animation in kindergartens, schools with a large number of children, picnics, festivals as well as hanging out with family and friends in the garden. Folding metal frame allows easy transport and quick installation, saves space during storage. Furniture is stable, strengthened mountings, rounded edges and secured the safety of children.

Metal construction is made of hot rolled steel strip St 37.2, thickness of 2,0 and 2,5 mm. Table- and bench boards made of spruce or fir, glued with good quality glue D-4 and dried on 8% (+ -2) moisture.



Detalji/Details



Option of screw binding from under.

Option with sharp edges.



Colors: Wood parts painted with ecological laquers on water basis, in colors according to customer's request or with UV lacquer.

All metal parts are electrostatic coated with powder laquer by RAL card on customer's request. The brackets are galvanized - light.

Karakteristike/Characteristics:

Dimenzije/Dimensions [mm]	Dužina/Length	Širina/Width	Visina/Height	Debljina ploča/Thickness of Boards
Sto/Table:	1100/1300	400/500	520/600	20/22
Klupa/Bench:	1100/1300	200/250	370/380	20/22

Packaging on the disposable palette, 17 sets. Protection for the transport and handling is ensured. Palette is being protected with stretch wrap, and tied with PVC tape. Possibility of individual packaging in cardboard on customer's request.



Cocktail table with round plate is designed for terraces, balconies, gardens, pubs etc. The table is designed in a combination of wood - metal with folding metal frame, which makes it mobile and easy to use. Very nice and easy to fit in all the places..



Detalji/Details



Colors: Wooden part is painted with UV lacquer, in colors on customer's request. All metal parts are electrostatic coated with powdered lacquer by RAL card, on customer's request.

Karakteristike/Characteristics:

Dimenzije/Dimensions [mm]	Promjer/Diameter	-	Visina/Height	Debljina ploča/Thickness of Boards
Sto/Table:	Ø 800	-	1180	27

Possibility of choosing another dimensions according to customer's request.

Packaging on the disposable palette, 20 pcs. Edges are protected by cardboard shields. Protection for the transport and handling is ensured. Palette is being protected with stretch wrap, and tied with PVC tape. Possibility of individual packaging in cardboard on customer's request.



Economical and very sturdy tabouret has a seat made of beech plywood. Possibility to use in different purposes. Metal frame is made of pipes Ø 21,3 x 1,5 mm of hot rolled steel strip St 37.2.



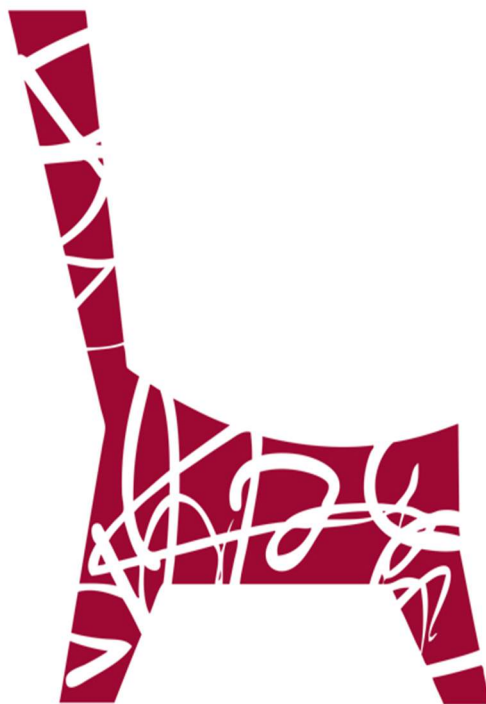
Colors: Wooden parts are painted with UV lacquer, on customer's request. Metal parts are electrostatic coated with powdered lacquer by RAL card, on customer's request. Standard color of legs is brown RAL 8007, PE.

Karakteristike/Characteristics:

Dimenzije/Dimensions [mm]	Promjer/Diameter	-	Visina/Height	Debljina ploča/Thickness of Boards
Tabure/Tabouret:	Ø 350 mm		470	10

Packaging on the disposable palette, 200 pcs. Protection for the transport and handling is ensured. Palette is being protected with stretch wrap, and tied with PVC tape.

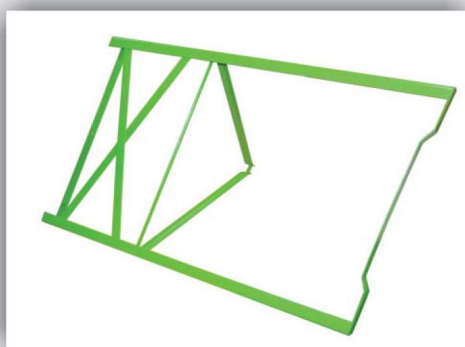




vebo.si[®]

Contract furniture

AG VEBO d.o.o., Tržaška c. 133
1000 Ljubljana



Color: Metal frame is electrostatic coated with powdered lacquer by RAL card, on customer's request. Standard colors: RAL 6018 PE, RAL 7024 PE i RAL 7008 PE.